

Location	Size	Design Firm
Repulse Bay	2,000 sq.ft	Apollo Design HK



Five-star Opulence

Bold marble veins, and striking patterns, make for a hotel-like retreat in Repulse Bay
 精緻的雲石紋理和豐富圖案，在這幢淺水灣別墅交織出酒店般的五星級氛圍

Photography Adrianna Cheung



CLIENT BRIEF

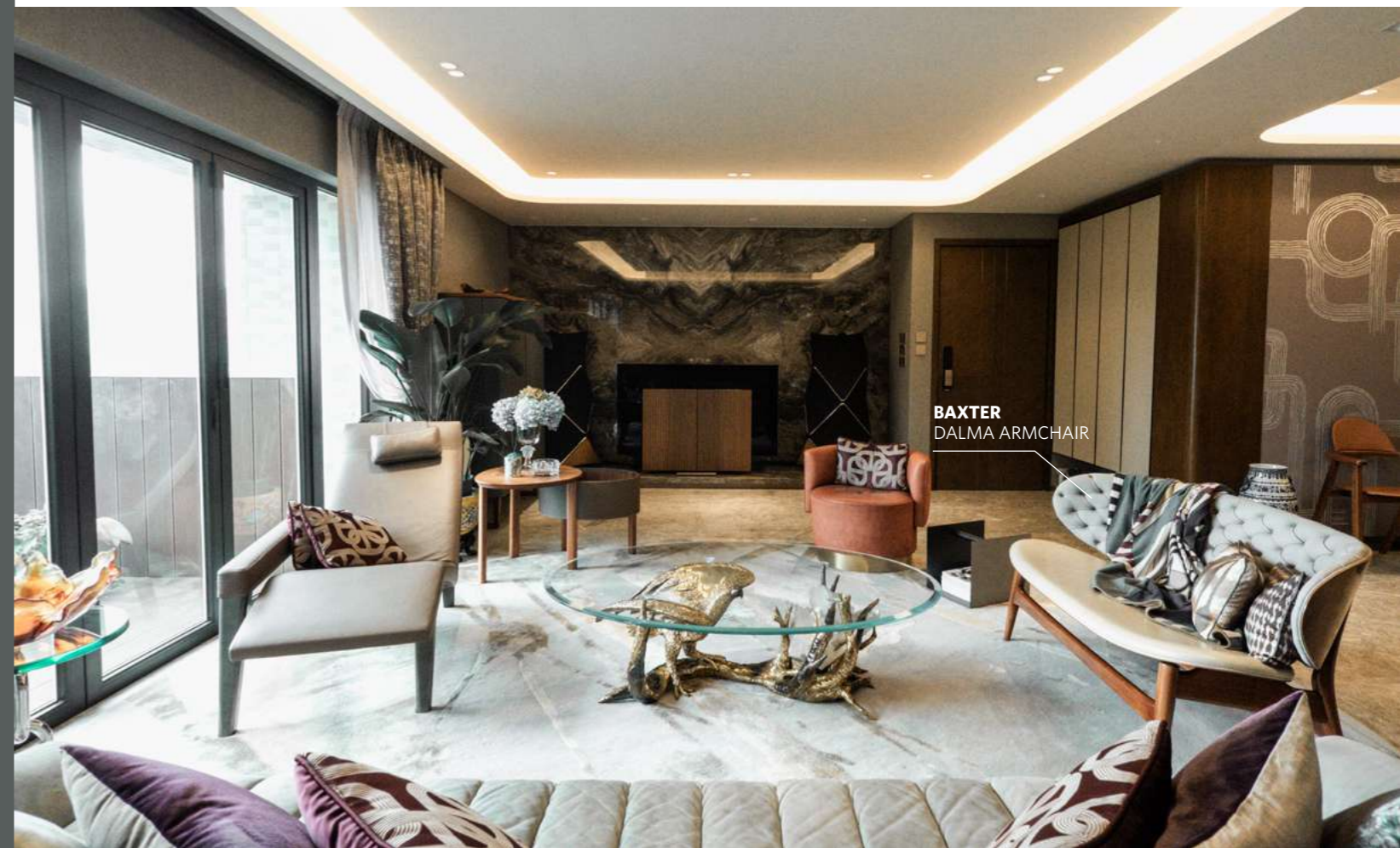
The homeowners is a couple, who desired a luxurious yet refined living space that offers a five-star experience.

戶主夫婦追求華而不俗的生活品味，期望塑造五星級的精緻體驗。

CONCEPT & STYLE

Ian Ngai, designer at Apollo Design HK, says: "Inspired by the elegance of five-star hotels, this home emphasises an earthy palette complemented by bold marble accents." In terms of colour, deep wood tones and various shades of grey add depth and sophistication. The master bedroom continues the earthy theme with a headboard wall that features the same wallpaper as the living room.

Apollo Design HK 首席設計師 Ian Ngai 表示：「我們以五星級酒店的精緻體驗作靈感，以大地色系為主調，配合雲石、鋼材等質材帶出高貴氣派。」項目以深木色配搭灰色為主調，牆身和地面採用不同深淺的灰色，增加層次感。主人套房以大地色系為主調，床背壁裱貼與客廳特色牆相同款式的牆紙。





ST. LOUIS
EXCESS HORIZONTAL
CHANDELIER

== Tips ==

MARBLE MARVEL

Marble takes centre stage in the living and dining areas. The living room TV wall and dining room feature wall both showcase book-matched marble, creating a striking visual impact. The new guest bathroom pairs dark and light marble for an elegant look.

雲石魅力

設計師巧妙搭配不同色調和紋理的雲石，客廳以深色雲石作電視壁，配襯地面所鋪的淺色雲石，形成深淺色調對比，視覺重量輕重有致。

BARELY THERE

In the master bathroom, switchable glass replaces traditional wall tiles to allow for better light and sense of space.

通透澄明

主人衛浴室以霧化玻璃代替牆磚作間隔，使空間通透，採光充足，大大提升空間感。



RECONFIGURATION

Originally a four-bedroom layout, the villa was reconfigured to feature three bedrooms, including two en-suites and a study. To adhere to feng shui principles, the guest bathroom was repositioned to avoid being in the centre of the home.

間隔原為四房間隔，現改為三房格局，包括兩間套房及一間書房。基於風水考慮，避免浴室佔據室內中央位置，因而改動原有客廳的位置。

CHALLENGE

The homeowners sought a home with strong artistic flair and a vacation-like feel. They also have a passion for collecting unique furniture and decor. The design needed to be flexible enough to accommodate future additions without disrupting the overall style.

由於戶主倆期望家居裝潢富藝術感和度假風情，且愛收藏特色擺設及家具，所以室內設計需要考慮戶主日後增添新擺設，亦不影響整體設計風格。

SOLUTION

To ensure a cohesive and harmonious look, the designer used marble with book-matched patterns and continuous textured wallpaper throughout. The always-in charm of marble serves as a perfect backdrop for the homeowner's growing furniture collection.

為讓空間彰顯藝術感，特意選上具併花效果的雲石和牆紙，使紋理及圖案連貫，渾然一體。雲石的永恆魅力，為屋主不斷增加的家具收藏提供完美背景，確保家居歷久常新。



BANG & OLUFSEN
BEOSOUND9000



THIS HOME
EMPHASISES AN
EARTHY PALETTE
COMPLEMENTED
BY BOLD MARBLE
ACCENTS