

Location	Size	Design Firm
Quarry Bay	752 sq.ft	Homeric Interior Design



Curvaceous Charm

Ample storage space is nicely concealed behind curves at this dwelling in The Orchards
逸樺園752呎住宅·圓弧輪廓交織出流暢動線

Photography Steven Ko

CLIENT BRIEF

The homeowners are a young couple who sought to expand their home into a four-bedroom, two living-room layout, with ample storage.

屋主是一對年輕夫婦，期望於有限空間打造四房兩廳間隔，並需要大量收納空間。

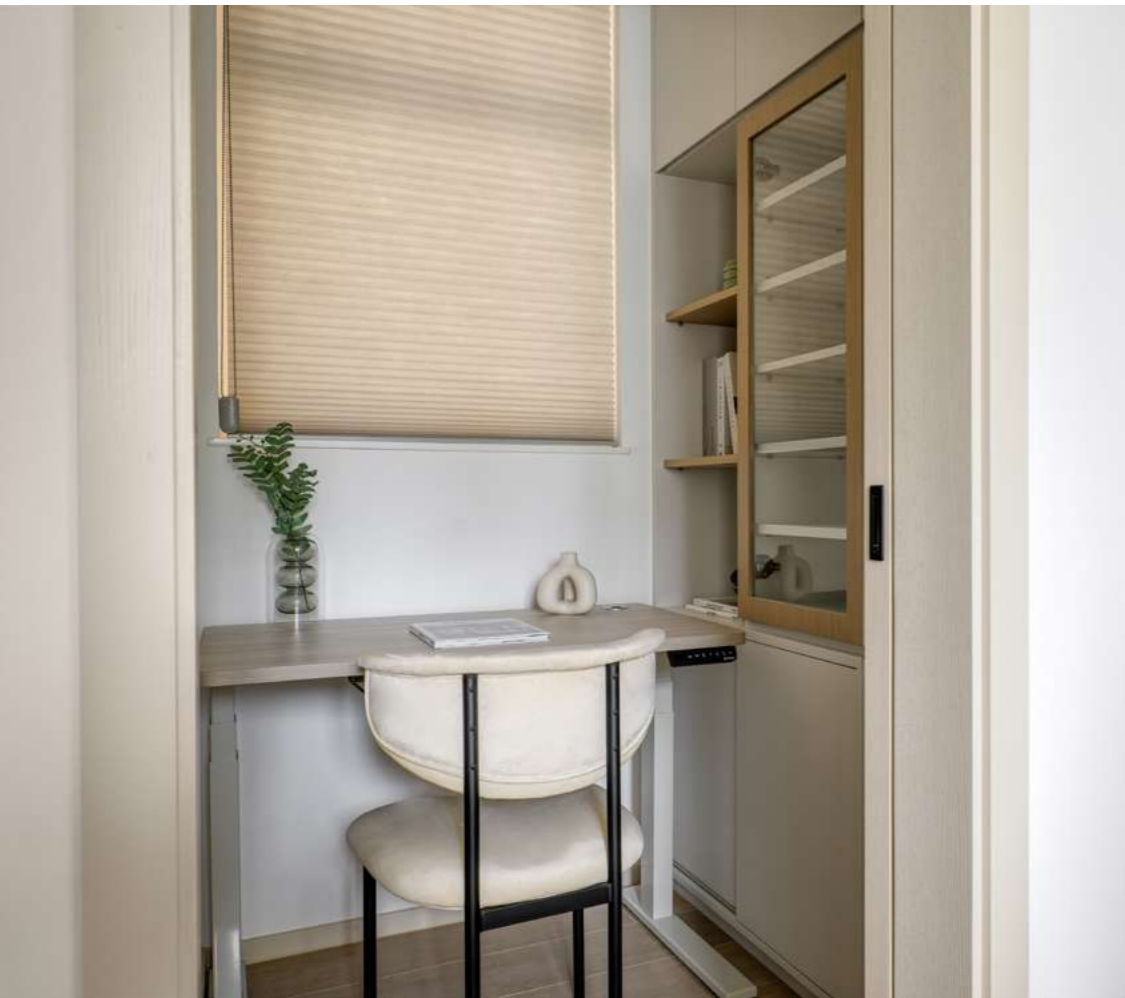
CONCEPT & STYLE

“We embraced a minimalist, elegant style, opting for sleek, stylish lines, over intricate classical mouldings, and added metal elements for a sophisticated touch,” said Ray Hung, founder of Homeric Interior Design.

Public areas flow seamlessly with graceful curves, seen on the living room ceiling, accent walls, and the kitchen’s curved glass. The master bedroom features curvilinear designs in the wardrobes, bathroom door frames, and mirrors. Metal details in the kitchen frameworks, living room display cabinets, and sofa backlighting further enhance the elegant aesthetics.

Homeric Interior Design創辦人Ray Hung表示：「設計採用簡約優雅風格，捨棄複雜而多層次的古典花線，反而運用簡潔時尚的花線點綴，見於梳化背壁，並配合金屬元素，帶出高貴格調。」全屋以優美弧線貫穿，例如客廳天花、飾壁，還有廚房的弧形玻璃。主人房衣櫃門面、衛浴室門框和鏡框等亦融入弧線設計。設計師亦運用金屬細節為空間注入優雅質感，例如廚房框架結構，客廳陳列櫃框架，以至梳化背壁燈等。





== Tips ==

SHEER POWER

Using clear glass partitions is an excellent way to create an open feel. Here, full-height storage cabinets extend from the foyer to the dining area, so part of the kitchen wall is made of clear glass to open up the otherwise cramped space.

玲瓏剔透

以清玻璃間隔營造穿透感。這裡的全高收納櫃從玄關延伸至飯廳，為免玄關和廚房感覺侷促，廚房隔壁局部以清玻璃間隔，提升視覺空間感。

HIDE AND SEEK

Corrugated glass is a smart choice for bathroom sliding doors, allowing light to pass through while ensuring privacy.

波紋蕩漾

善用水波紋玻璃。在這個單位，水波紋玻璃用於浴室趟門，透光而不透視，可保私隱。

MARBLE ALTERNATIVE

Artistic paint is a great alternative to stone. Hung explained: "The thickness of natural marble can visually reduce space; artistic paint appears lighter while still looking natural."

如幻似真

以藝術漆塑造雲石紋理。Ray解釋：「由於天然雲石有厚度，相反藝術漆塗層夠薄，視覺上更輕盈，而且效果自然。」

A GOOD COAT

Coat your veneers. Cabinets and finishes throughout the home are crafted largely from ash wood veneer. To add visual depth, some veneers are coated with a grey finish instead of being left in their natural wood colour.

通透澄明

全屋硬作裝潢如櫃組和飾面，主要以水曲柳木皮製作，但並非全以原木色呈現，部分木皮做了灰色噴油效果，使木皮帶灰調，豐富視覺層次。

RECONFIGURATION

Originally a three-bedroom, two living-room layout, the floor plan was reconfigured to include a master bedroom, study, children's room, and an additional helper's room.

原為三房兩廳格局，現改為四房兩廳，包括主人房、書房、兒童房及工人房。其中主人房更融入衣帽間和梳妝區。

CHALLENGE

Incorporating ample storage within a four-bedroom, two living-room layout, proved to be quite difficult.

單位主要挑戰在於空間運用。在四房兩廳的間隔之上，需要加入大量收納空間，頗有難度。

SOLUTION

The kitchen was downsized to free up more living room space. Elegant, full-height storage cabinets with curved outlines, were added, flowing from the foyer to the dining area for a better sense of visual comfort.

設計師縮小廚房，以騰出更多客廳空間，並在玄關位增設全高收納櫃，呈柔美的弧線輪廓，一直延伸至飯廳，讓動線更舒適流暢。



ZARA HOME
ROUGH TEXTURED BLANKET



ARTISTIC PAINT
IS A GREAT
ALTERNATIVE
TO STONE